

# STATE OF CALIFORNIA NEW CAPITOL ANNEX BUILDING

JOINT RULES COMMITTEE OF THE LEGISLATURE OF THE STATE OF CALIFORNIA

JRC PRESENTATION

MARCH 22, 2021

SOM LIONÄKIS

**Turner**  
PWP LANDSCAPE ARCHITECTURE  
PAGE & TURNBULL



*“California’s new Capitol Annex should convey to visitors California’s positive, hope-filled outlook, founded upon the deliberative Democracy which unfolds there by **welcoming** all Californians, **engaging** all Californians, **safeguarding** the future of all Californians, & demonstrating **healthful, accessible & sustainable** designs while **preserving the beauty & vistas** of California’s legacy Capitol Park & **inviting** all its guests to explore & take **pride** in one of the most **energy-efficient** capitol buildings in the nation.”*

STATE OF CALIFORNIA NEW CAPITOL ANNEX BUILDING  
JOINT RULES COMMITTEE OF THE LEGISLATURE OF THE STATE OF CALIFORNIA

JRC PRESENTATION  
MARCH 22, 2021

## AGENDA

- 1. INTRODUCTION & OVERVIEW**
- 2. SITE DESIGN PRINCIPLES**
- 3. PARK & TREE PRESERVATION**
- 4. NEW CAPITOL ANNEX CONCEPTS**
  - **PLANS & STACKING DIAGRAMS**
  - **PUBLIC SPACE & LIGHT COURT**
  - **MASSING & FACADE DESIGN**

# INTRODUCTION & OVERVIEW

*“California’s new Capitol Annex should convey... healthful, accessible, and sustainable designs...”*



## INTRODUCTION & OVERVIEW

**The Capitol Annex Project is being done to address these current building deficiencies:**

- **ADA Access Compliance & Circulation**
- **Hazardous Materials**
- **Antiquated Building Systems**
- **Outdated Seismic Design**
- **Insufficient Public and Meeting Rooms**
- **Inadequate Office Spaces**
- **Floors Not Aligned**
- **Fire and Life Safety Concerns**
- **Security**
- **Outdated Building Code**

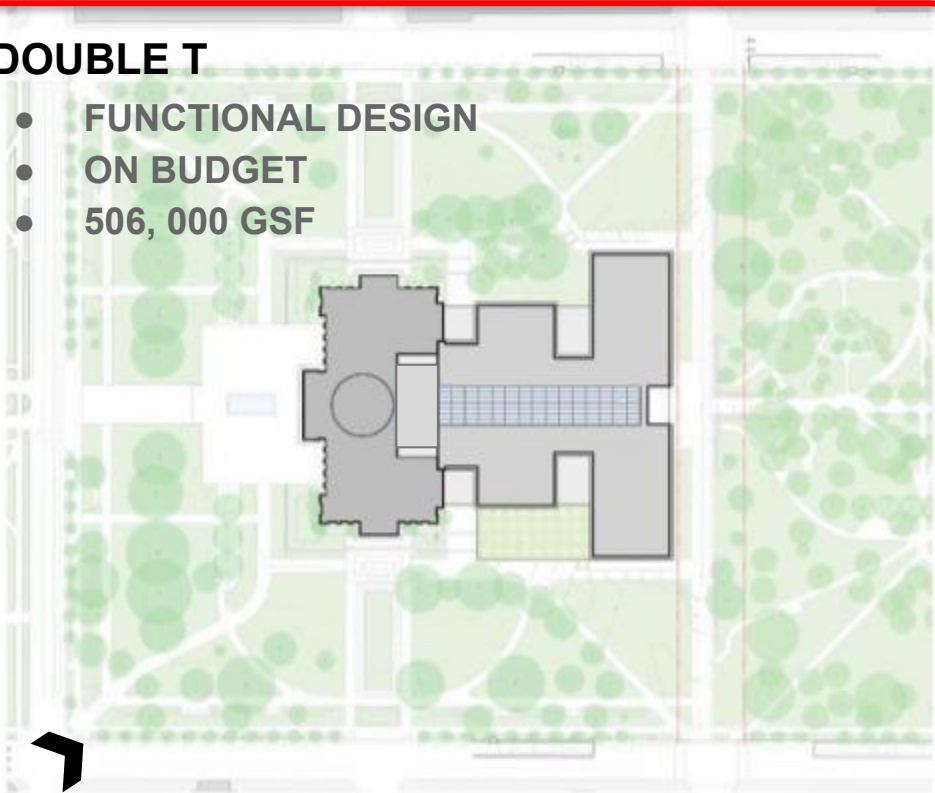


# INTRODUCTION & OVERVIEW

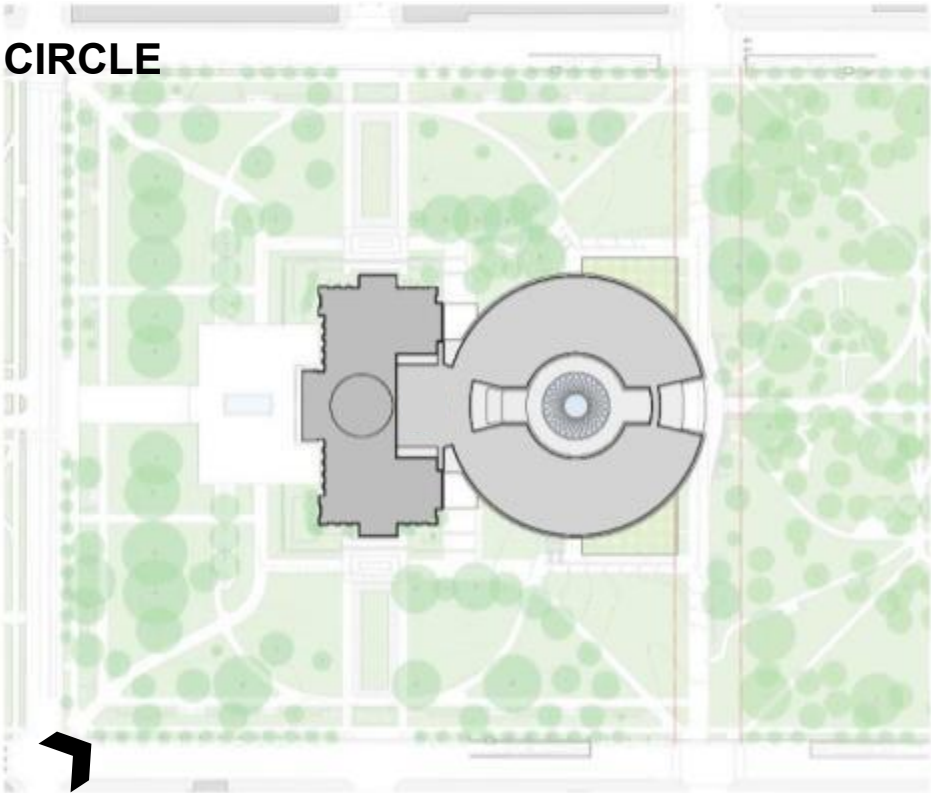
## 3 SCHEMES

### DOUBLE T

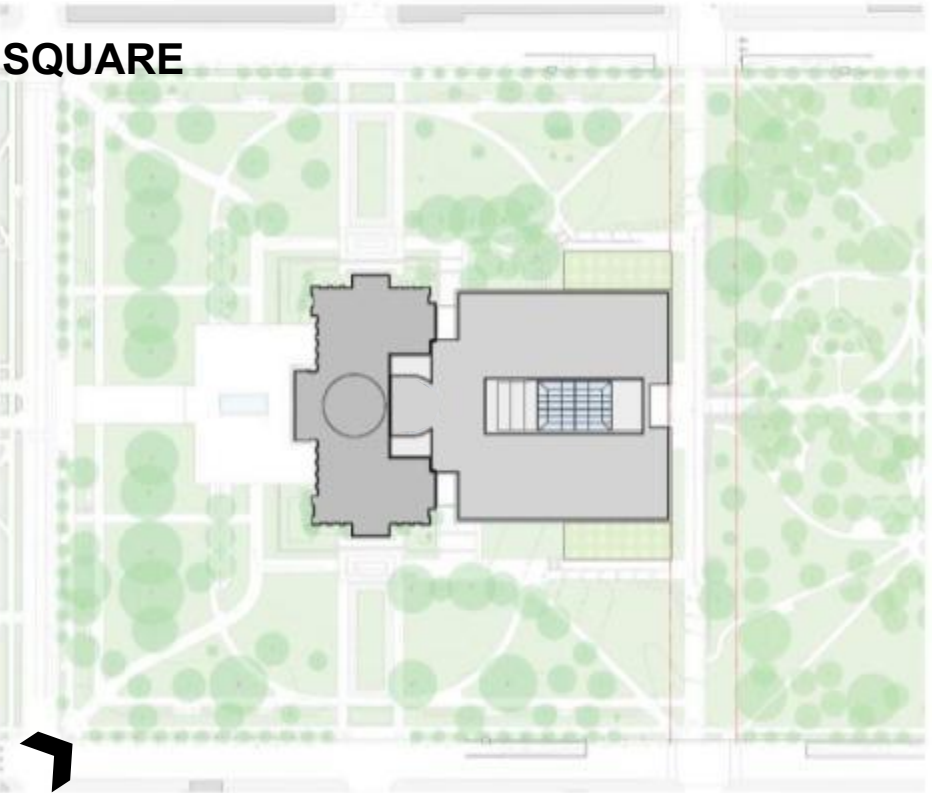
- FUNCTIONAL DESIGN
- ON BUDGET
- 506, 000 GSF



### CIRCLE



### SQUARE





INTRODUCTION & OVERVIEW  
DOUBLE T





# SITE DESIGN PRINCIPLES

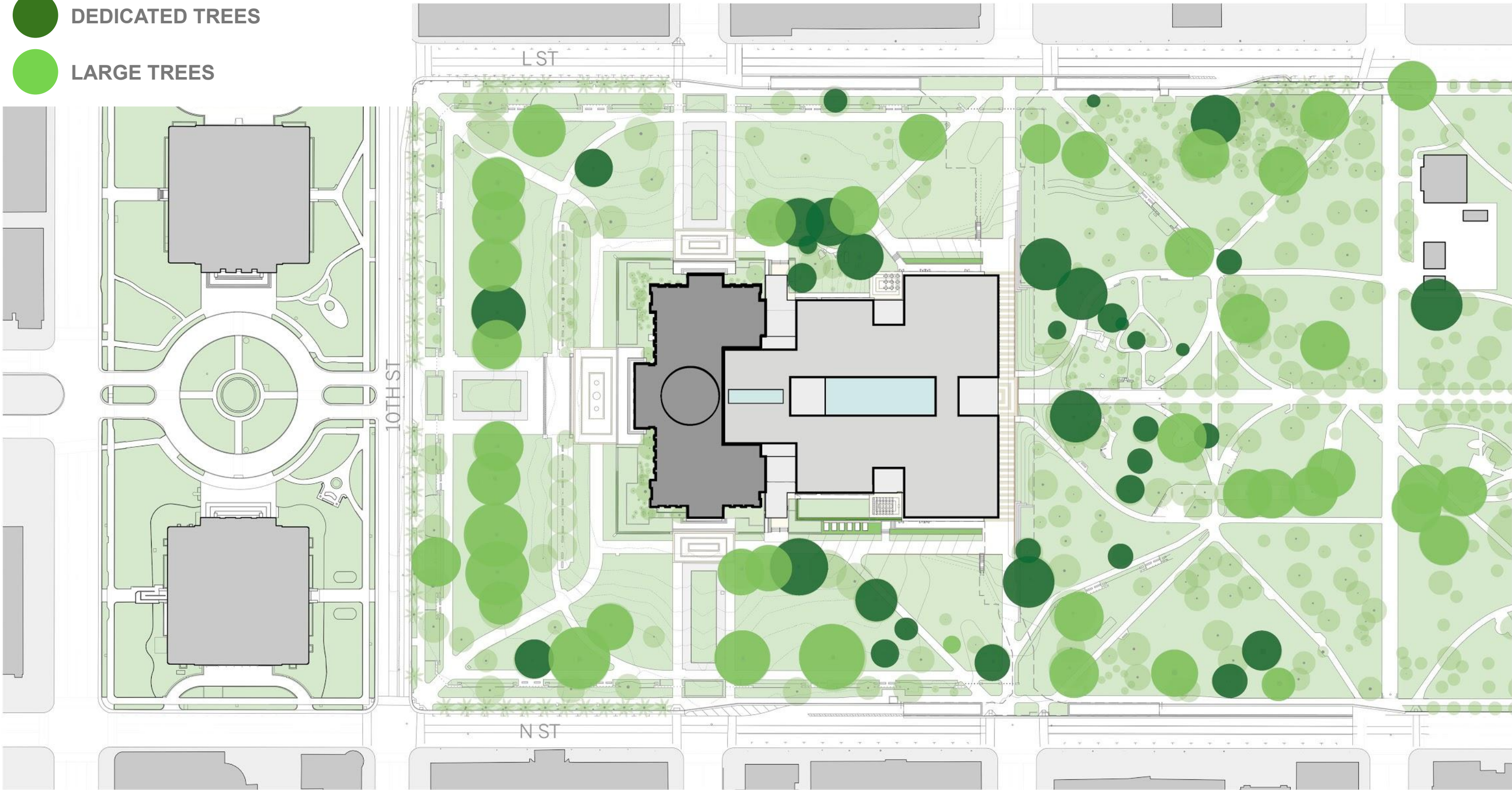
*“California’s new Capitol Annex should... preserve the beauty & vistas of California’s legacy Capitol Park & invite all its guests to explore & take pride...”*



SITE DESIGN PRINCIPLES

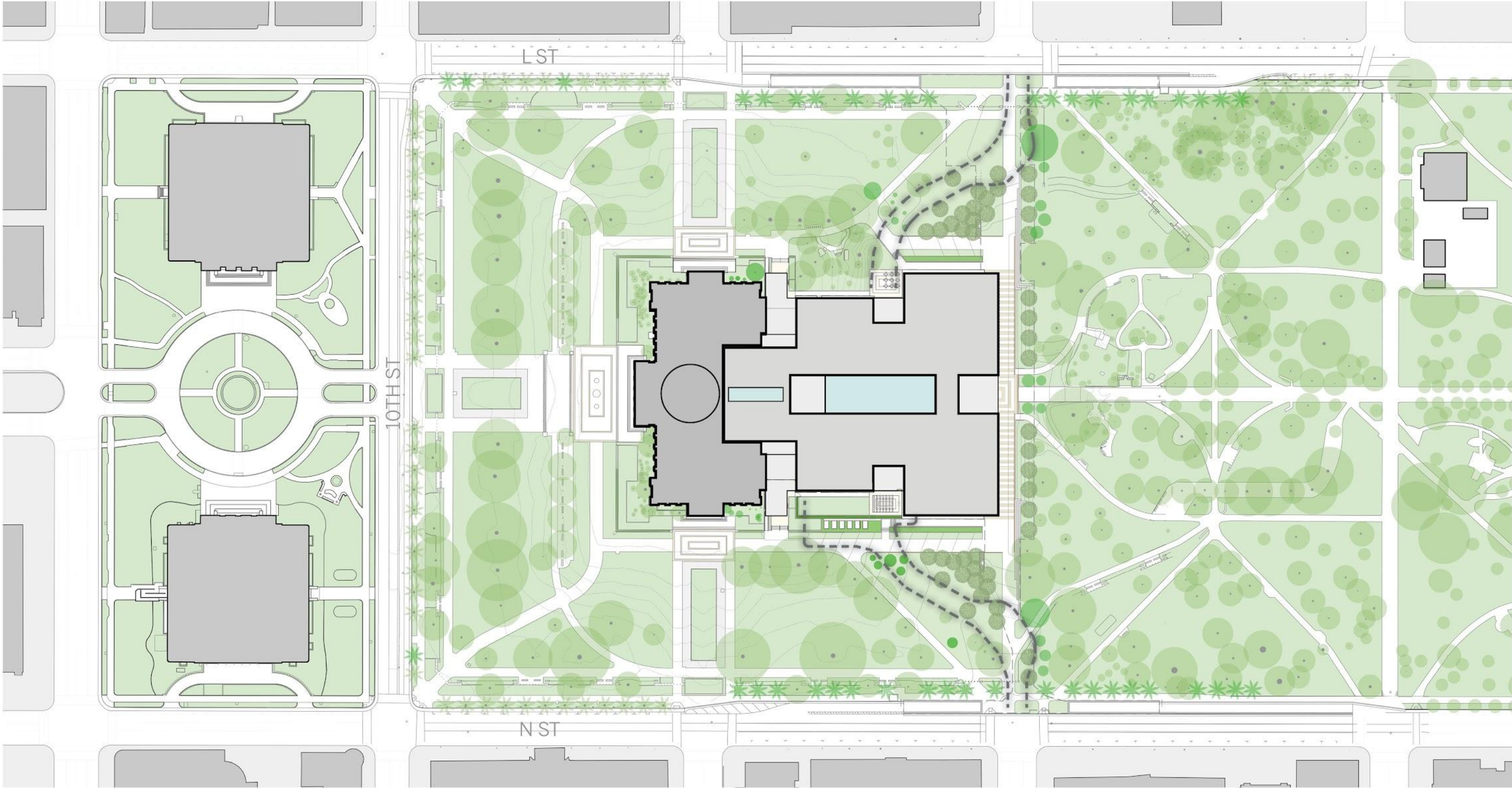
*“PRESERVE THE BEAUTY OF THE PARK”*

- DEDICATED TREES
- LARGE TREES



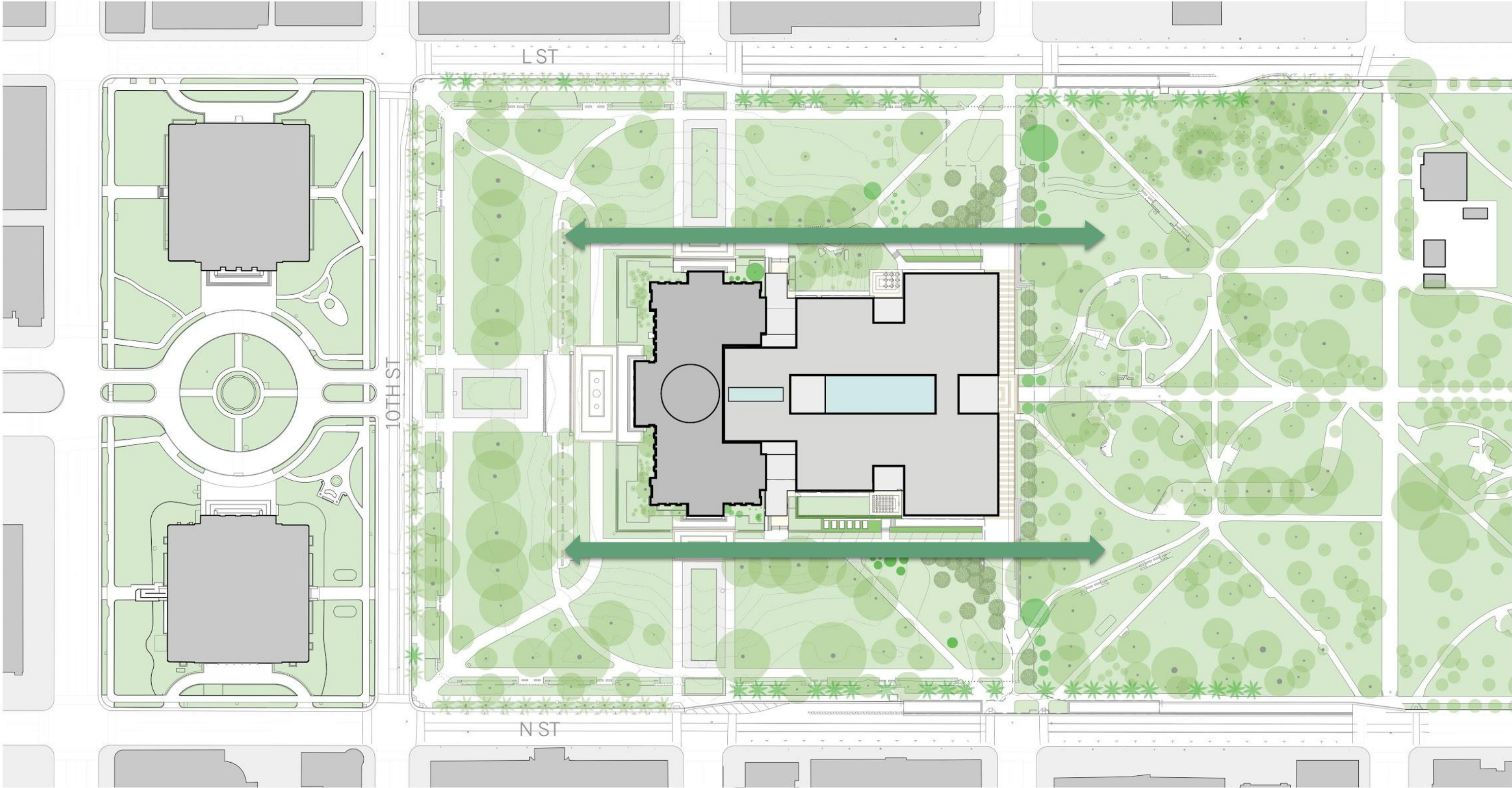


# SITE DESIGN PRINCIPLES RECONNECT THE PARK



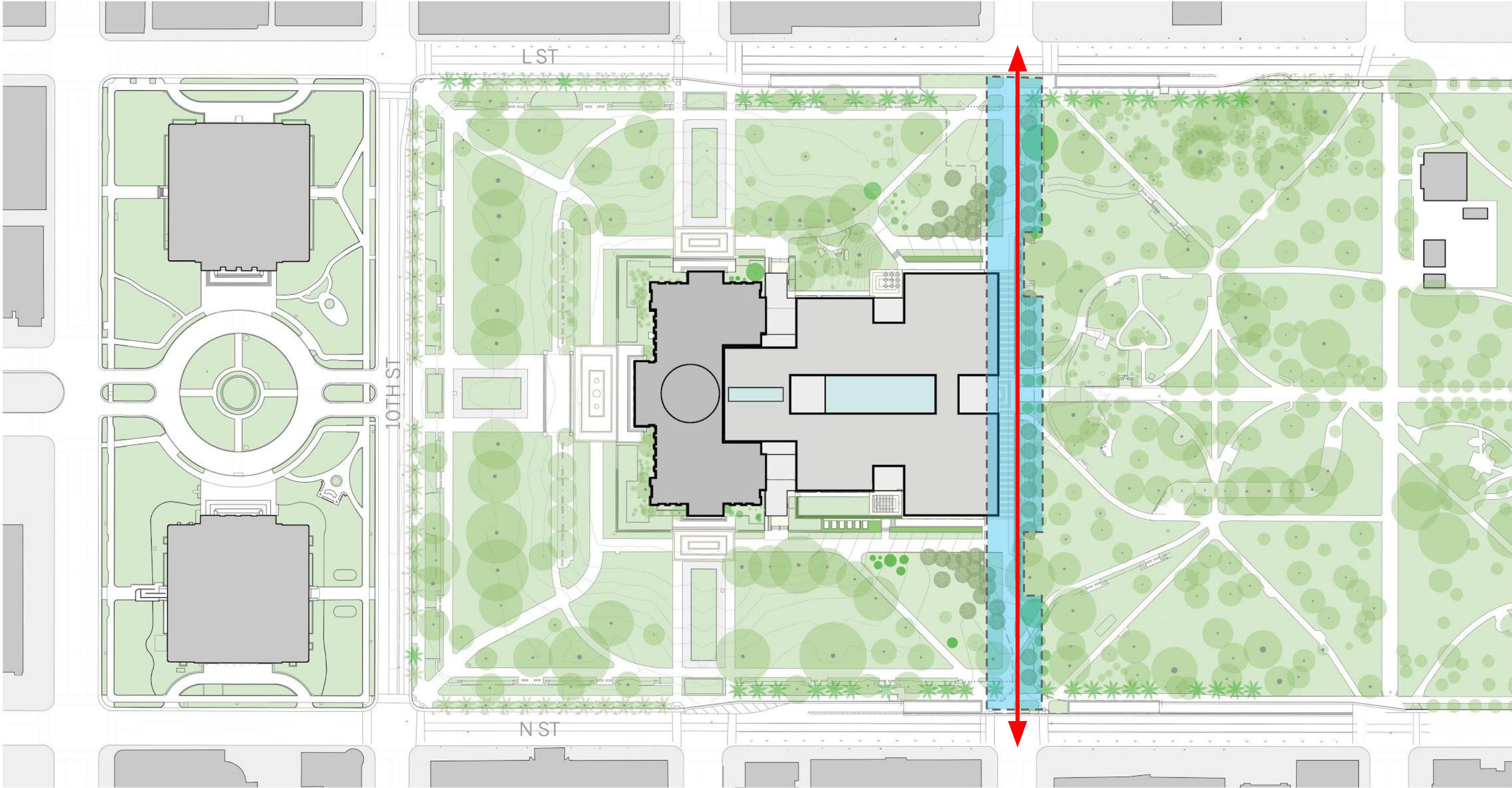


# SITE DESIGN PRINCIPLES RECONNECT THE PARK





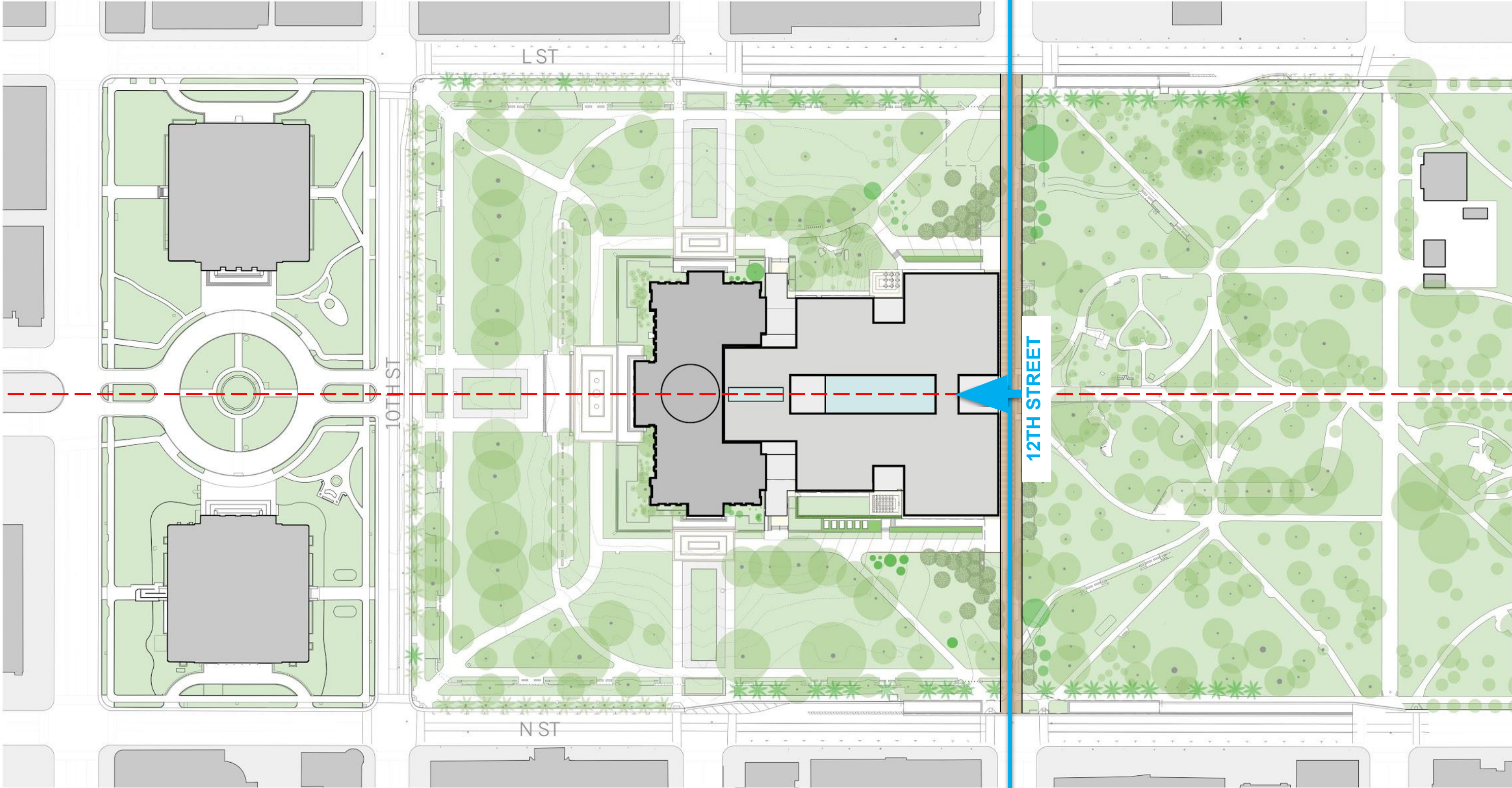
# SITE DESIGN PRINCIPLES RECONNECT THE PARK





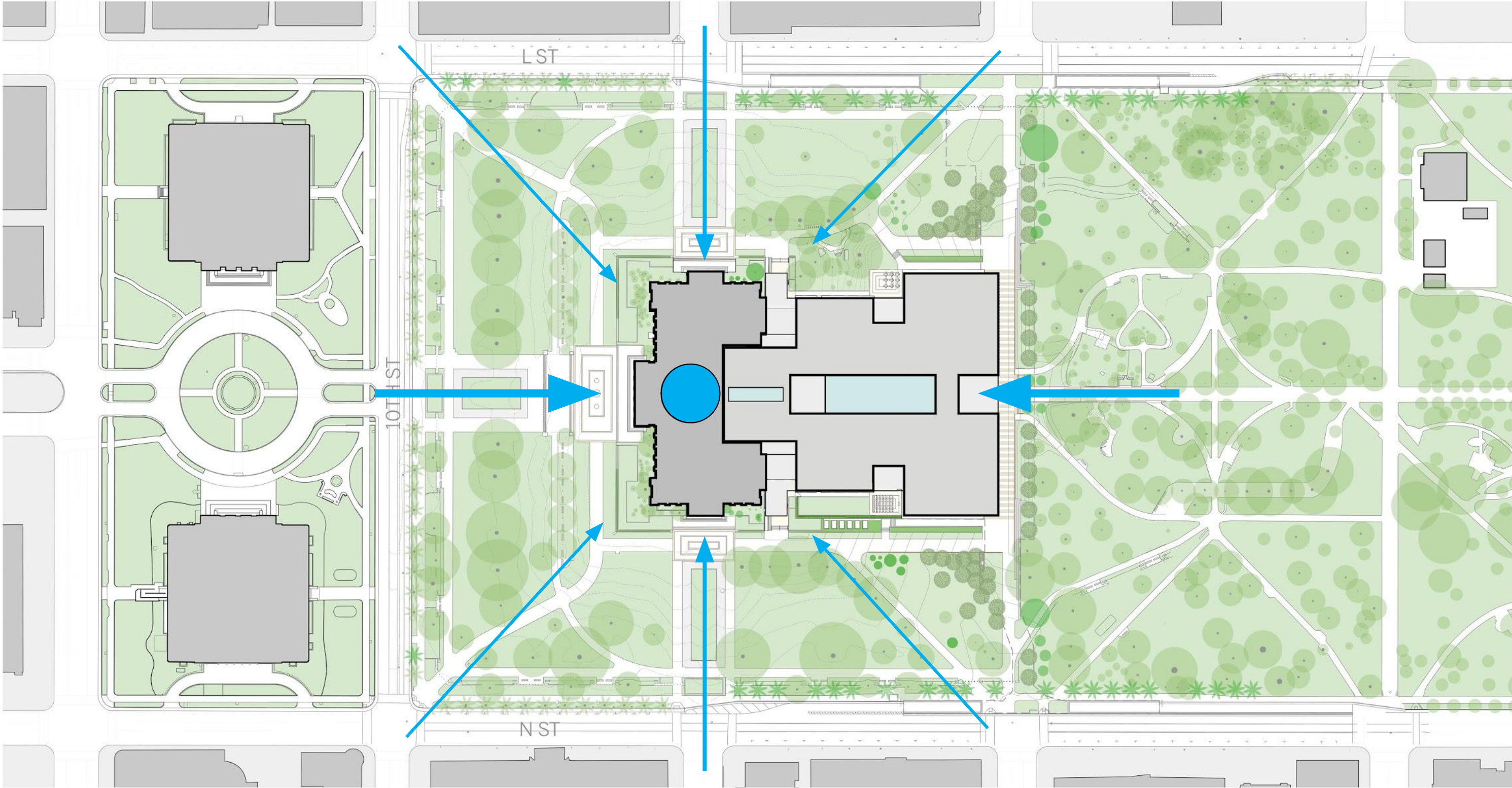
SITE DESIGN PRINCIPLES

**“INVITING ALL ITS GUESTS”: 12TH STREET PROMENADE**





SITE DESIGN PRINCIPLES  
"PRESERVE THE VISTAS OF THE PARK"



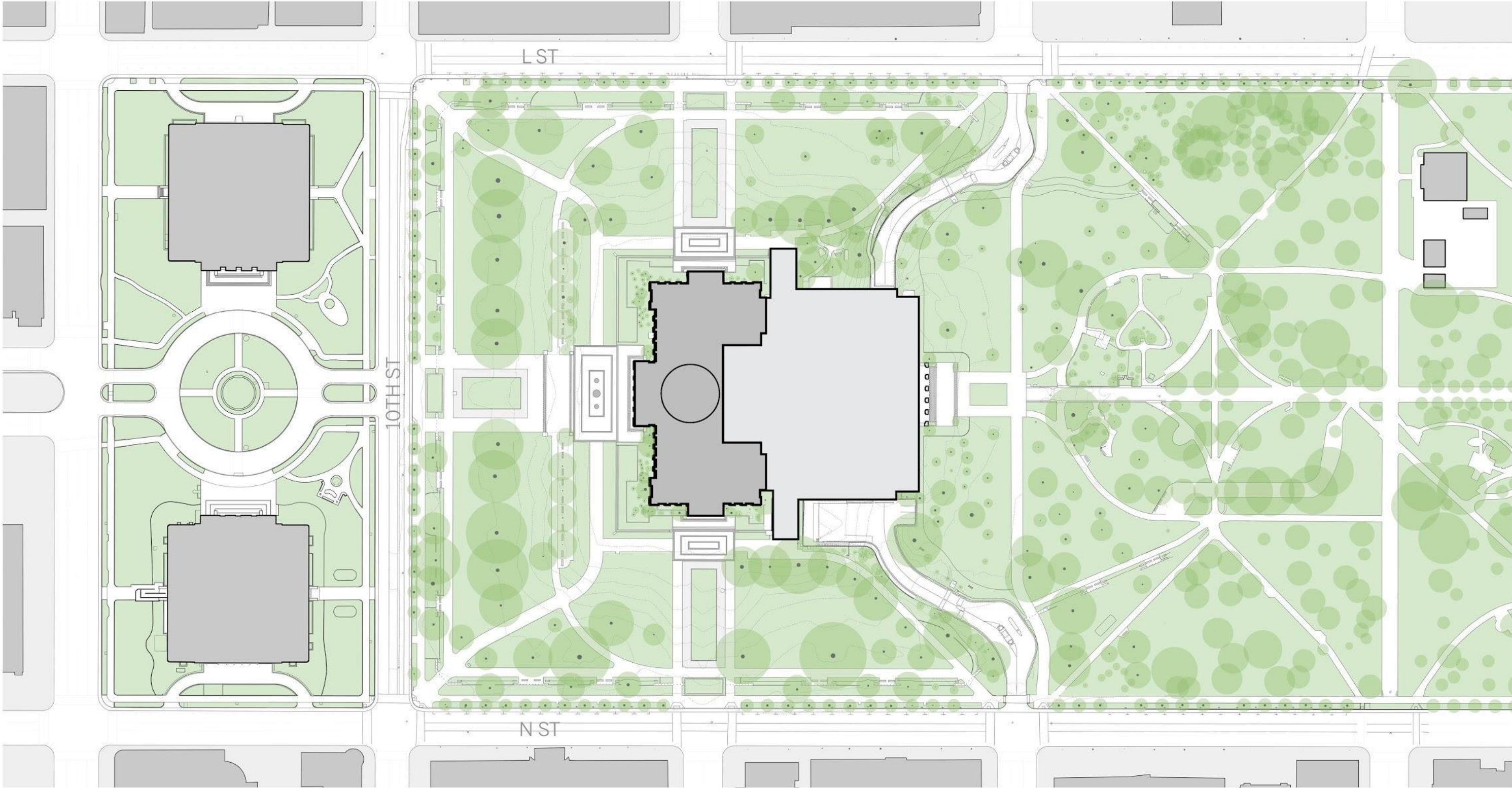


# PARK & TREE PRESERVATION

*“California’s new Capitol Annex should... preserve the beauty & vistas of California’s legacy Capitol Park & invite all its guests to explore & take pride...”*

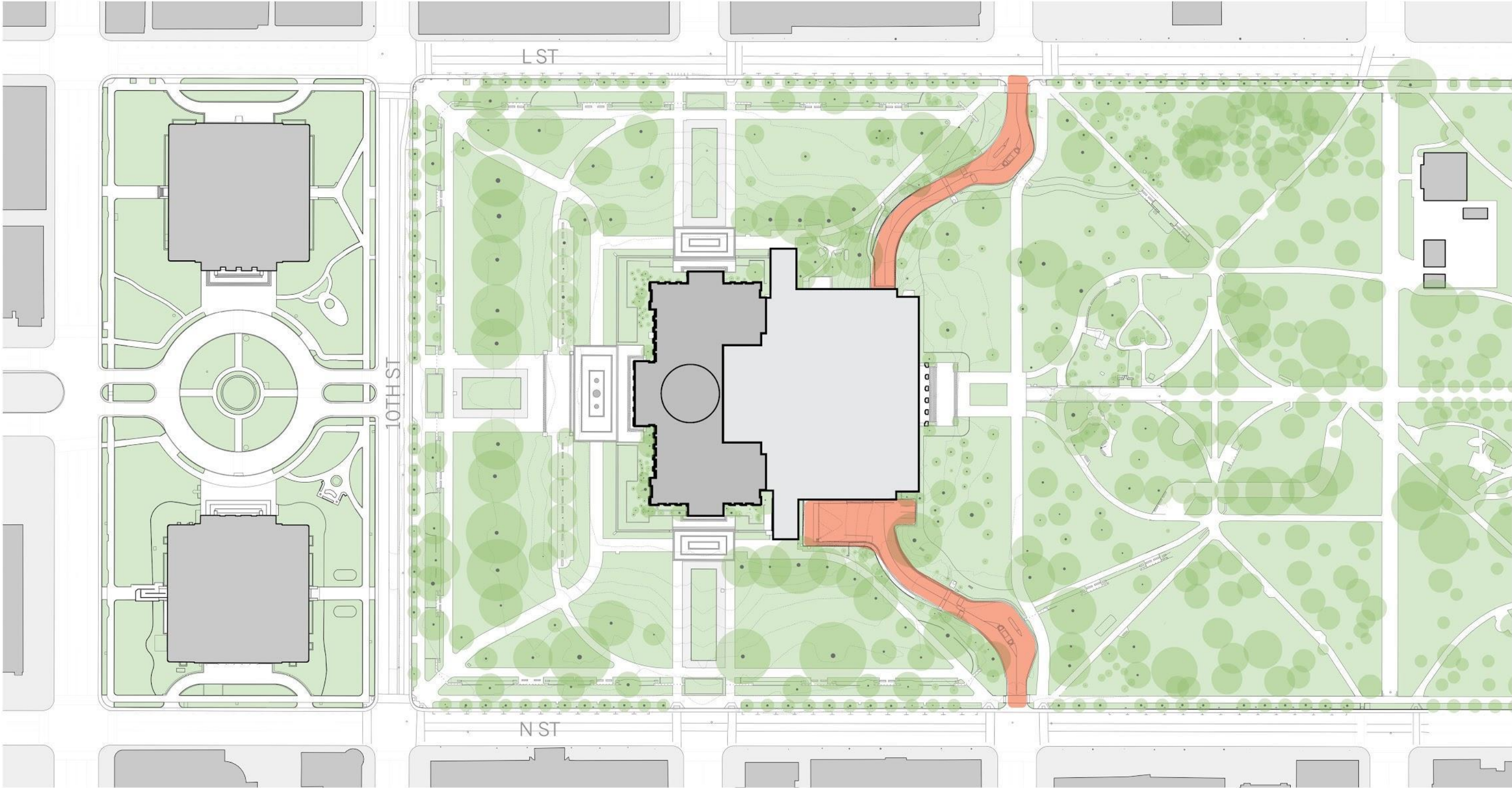


# PARK & TREE PRESERVATION EXISTING SITE



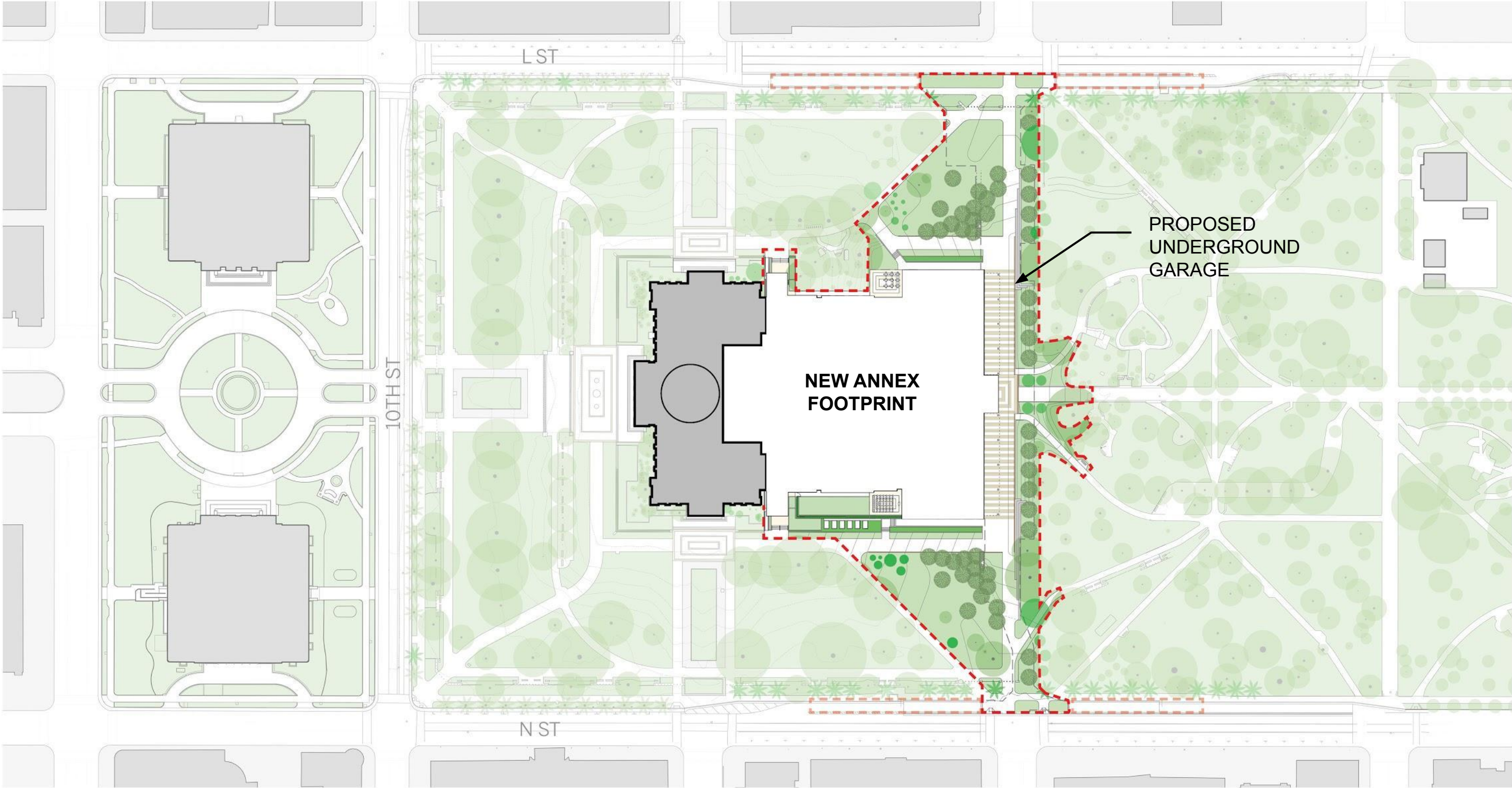


# PARK & TREE PRESERVATION IMPROVING THE PARK EXPERIENCE





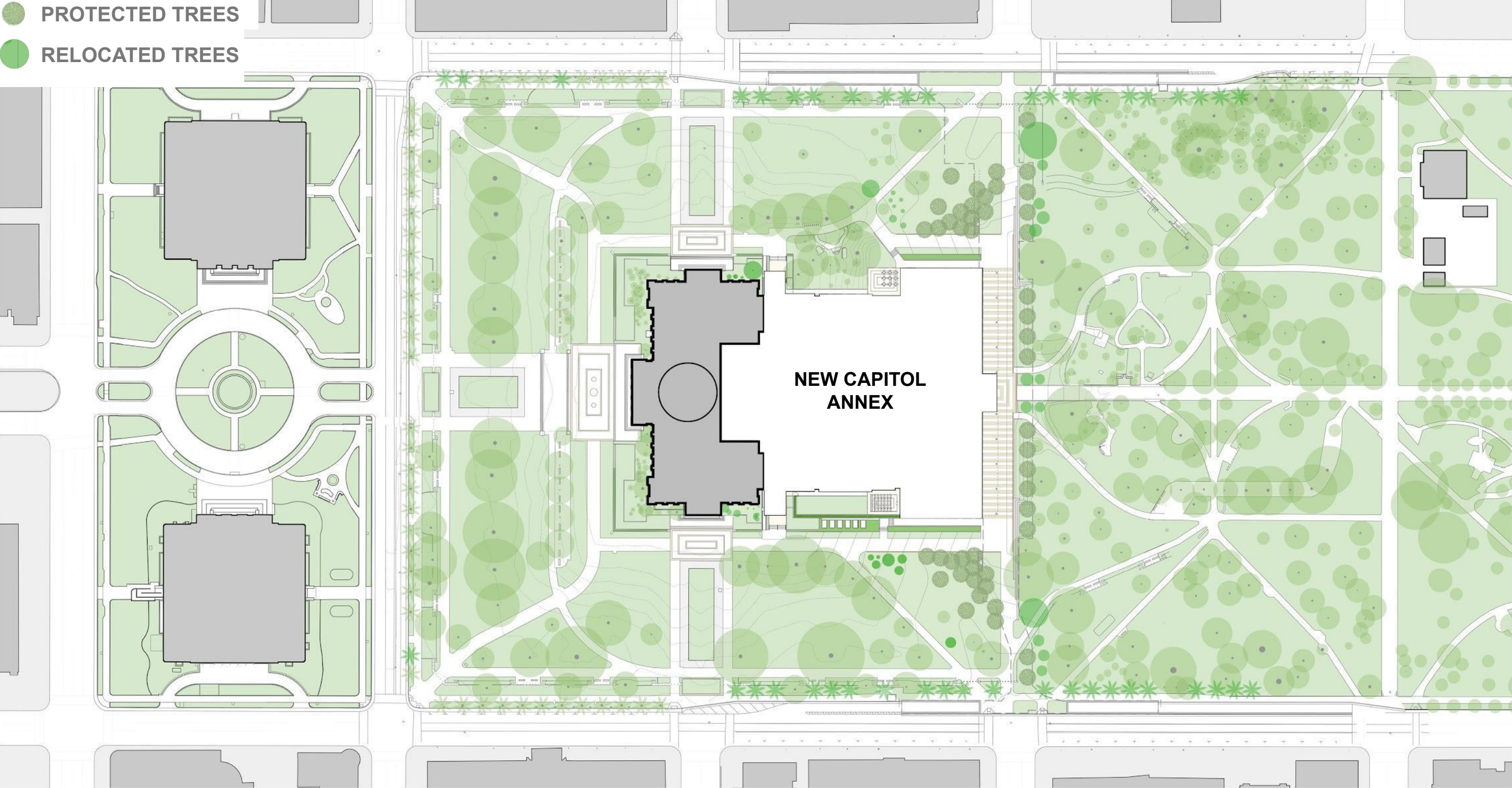
# PARK & TREE PRESERVATION PROPOSED SITE





# PARK & TREE PRESERVATION PROPOSED SITE

- PROTECTED TREES
- RELOCATED TREES



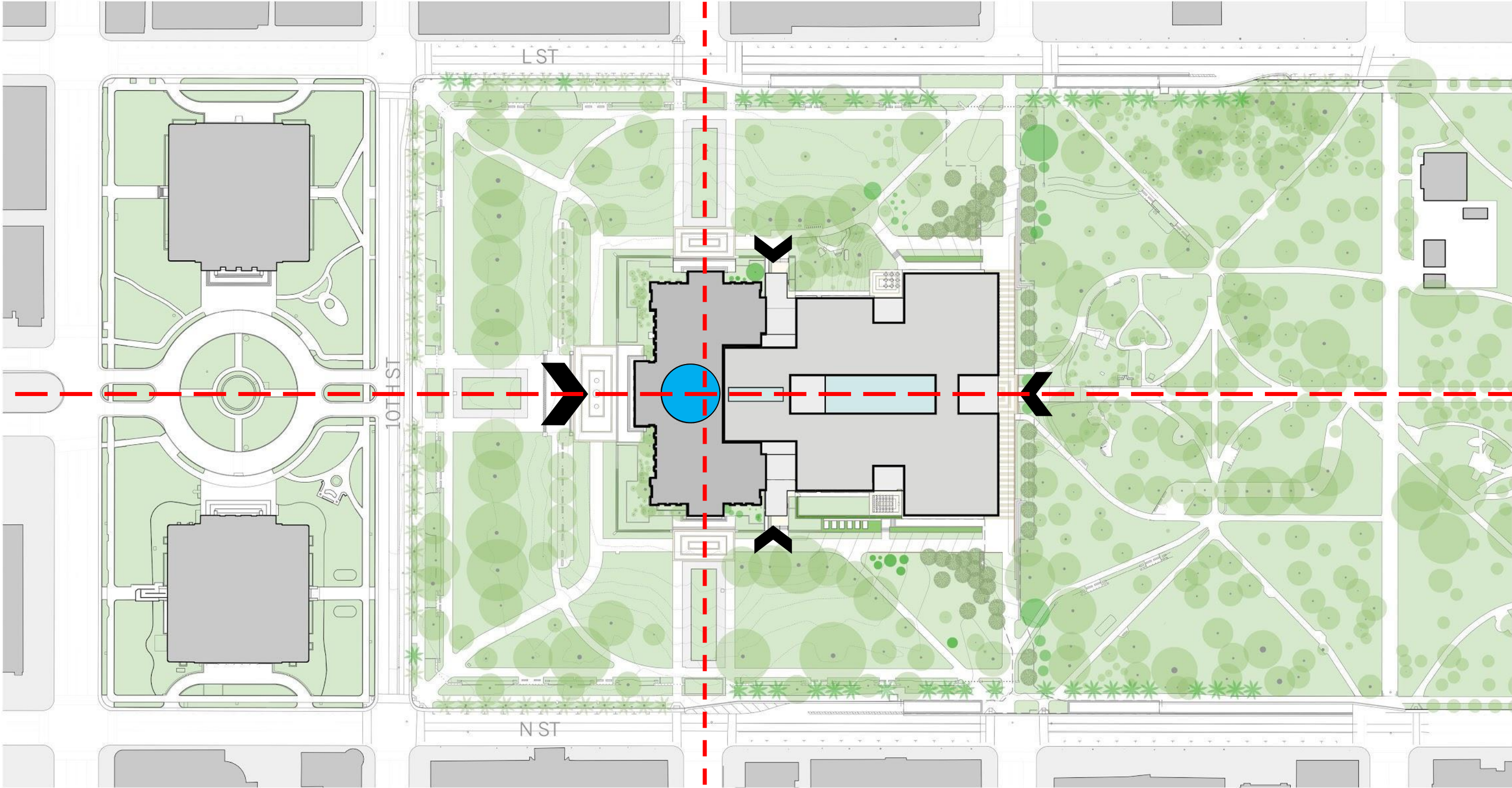


# NEW CAPITOL ANNEX CONCEPTS BUILDING ENTRIES & PUBLIC SPACE

*“California’s new Capitol Annex should... welcome all Californians, engage all Californians, safeguard the future of all Californians, & demonstrate healthful, accessible & sustainable designs...”*

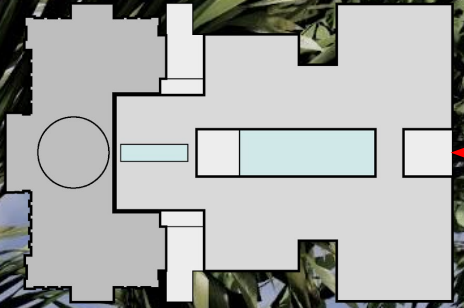


BUILDING ENTRIES & PUBLIC SPACE  
“WELCOMING, ENGAGING & SAFEGUARDING”



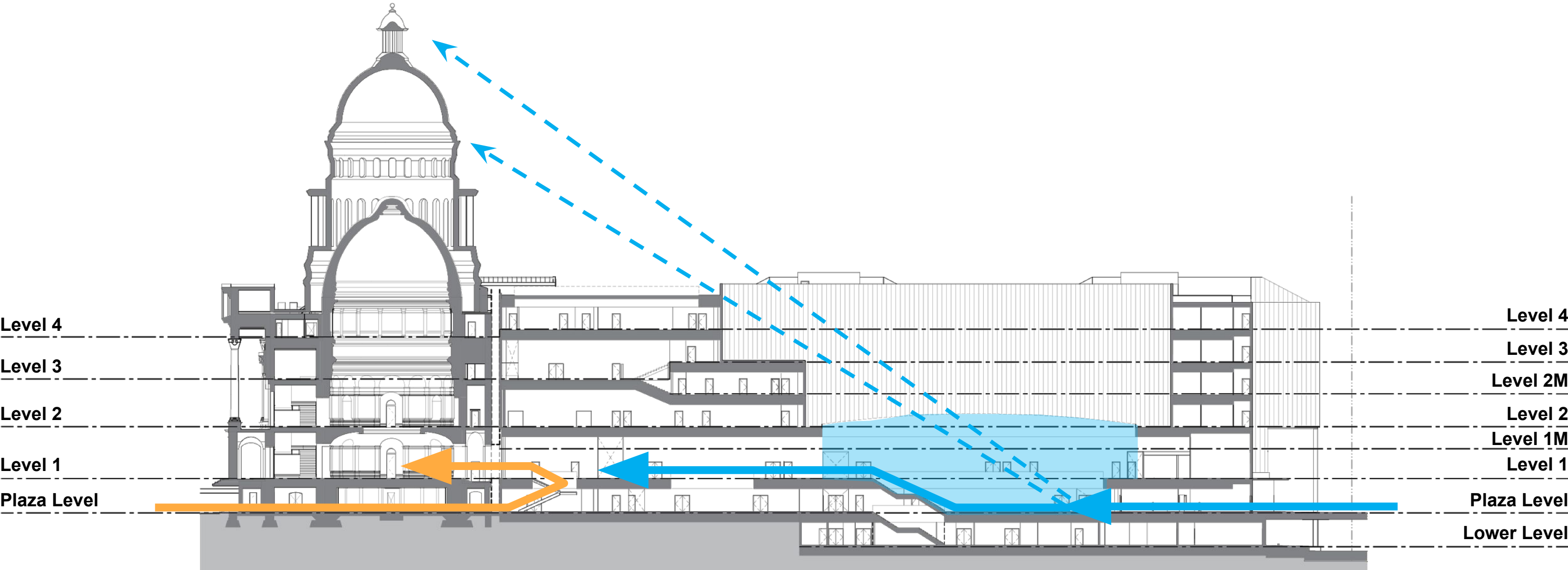
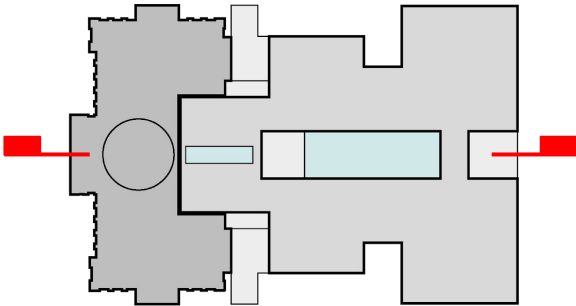


PUBLIC SPACE & LIGHT COURT  
“WELCOMING, ENGAGING & SAFEGUARDING”



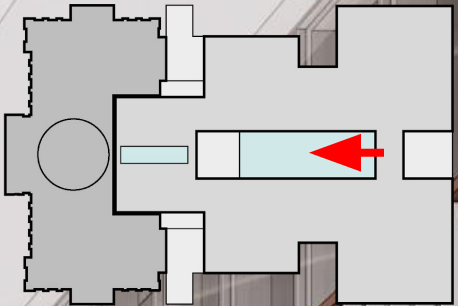


# BUILDING ENTRIES & PUBLIC SPACE MAIN PUBLIC CIRCULATION & VIEWS



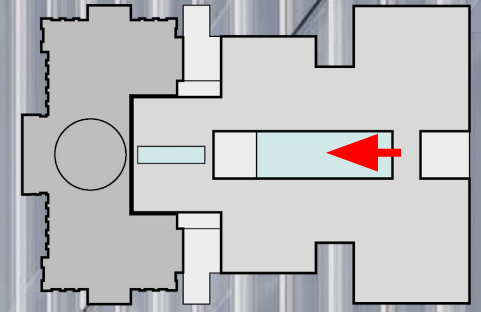


BUILDING ENTRIES & PUBLIC SPACE  
LIGHT COURT





BUILDING ENTRIES & PUBLIC SPACE  
LIGHT WELL





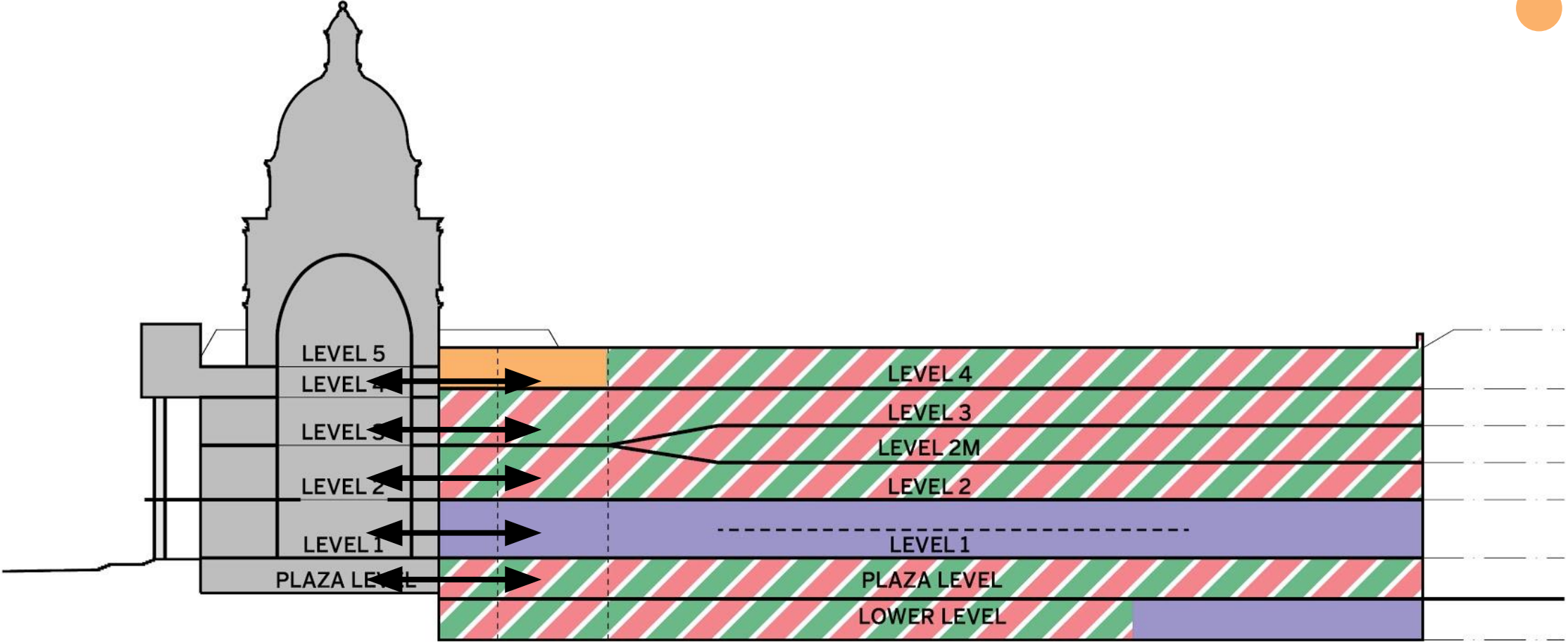
# NEW CAPITOL ANNEX CONCEPTS PLANS & STACKING DIAGRAMS

*“California’s new Capitol Annex should... welcome all Californians, engage all Californians, safeguard the future of all Californians, & demonstrate healthful, accessible & sustainable designs...”*



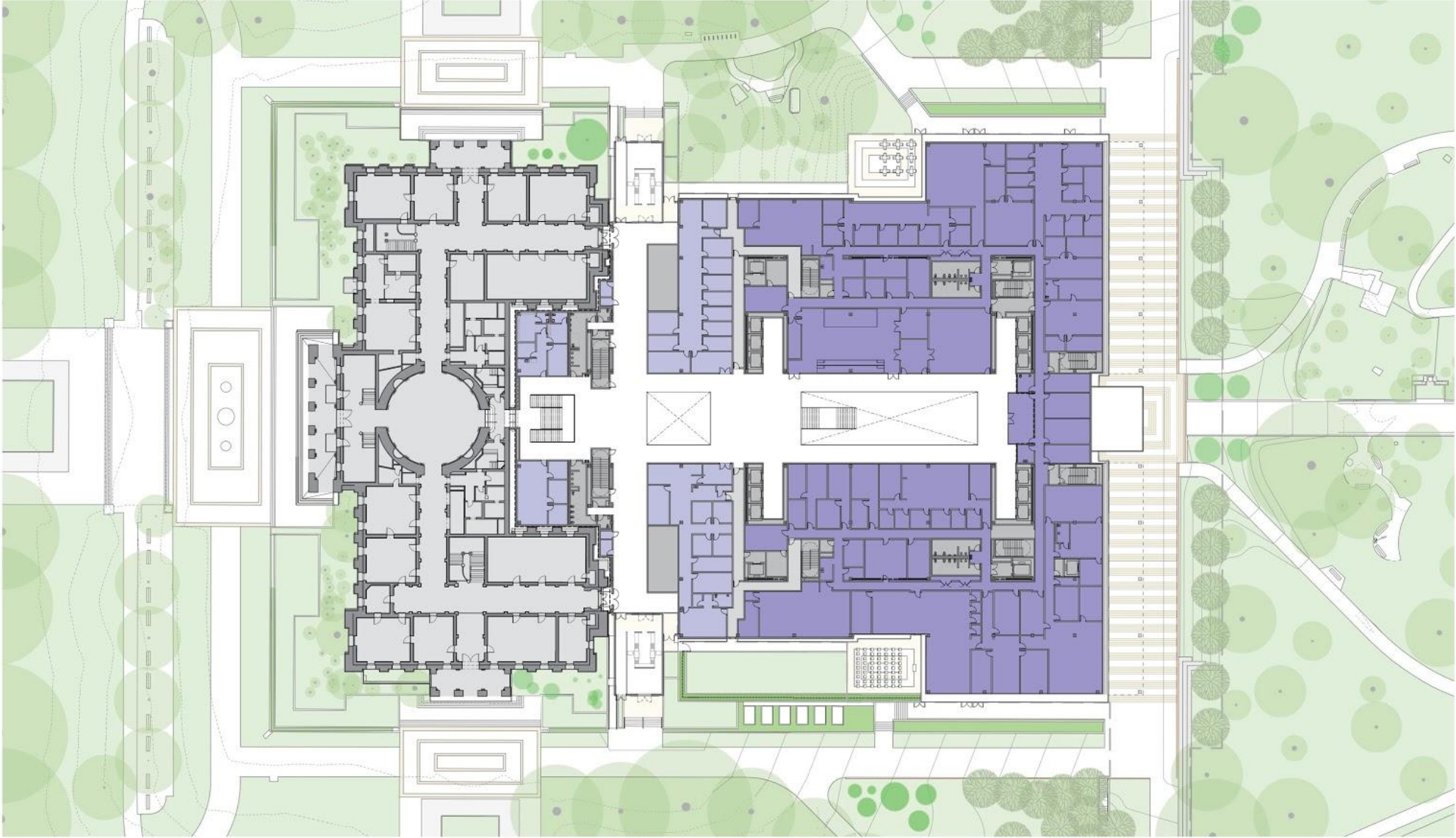
PLANS & STACKING DIAGRAMS  
 “ONE BUILDING”: STACKING DIAGRAM

- ASSEMBLY
- SENATE
- EXECUTIVE
- JOINT SUPPORT

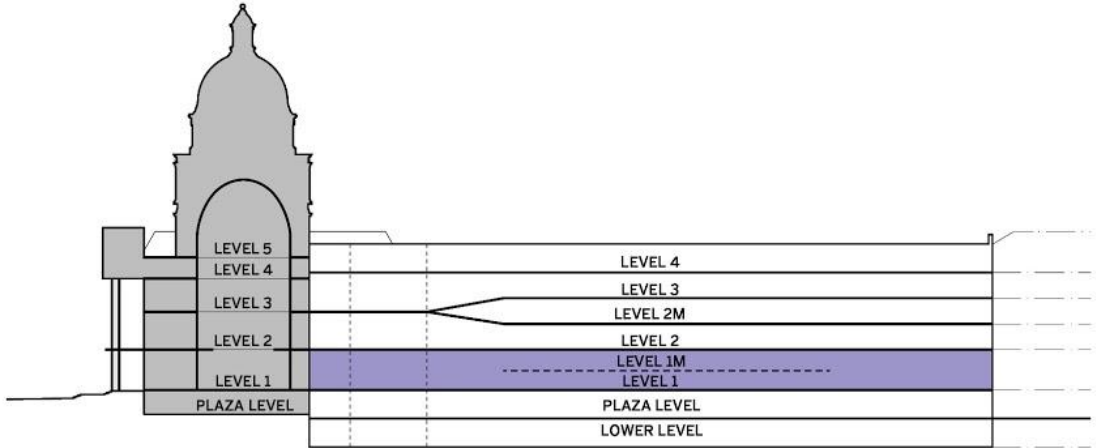




PLANS & STACKING DIAGRAMS  
 LEVEL 1 - EXECUTIVE

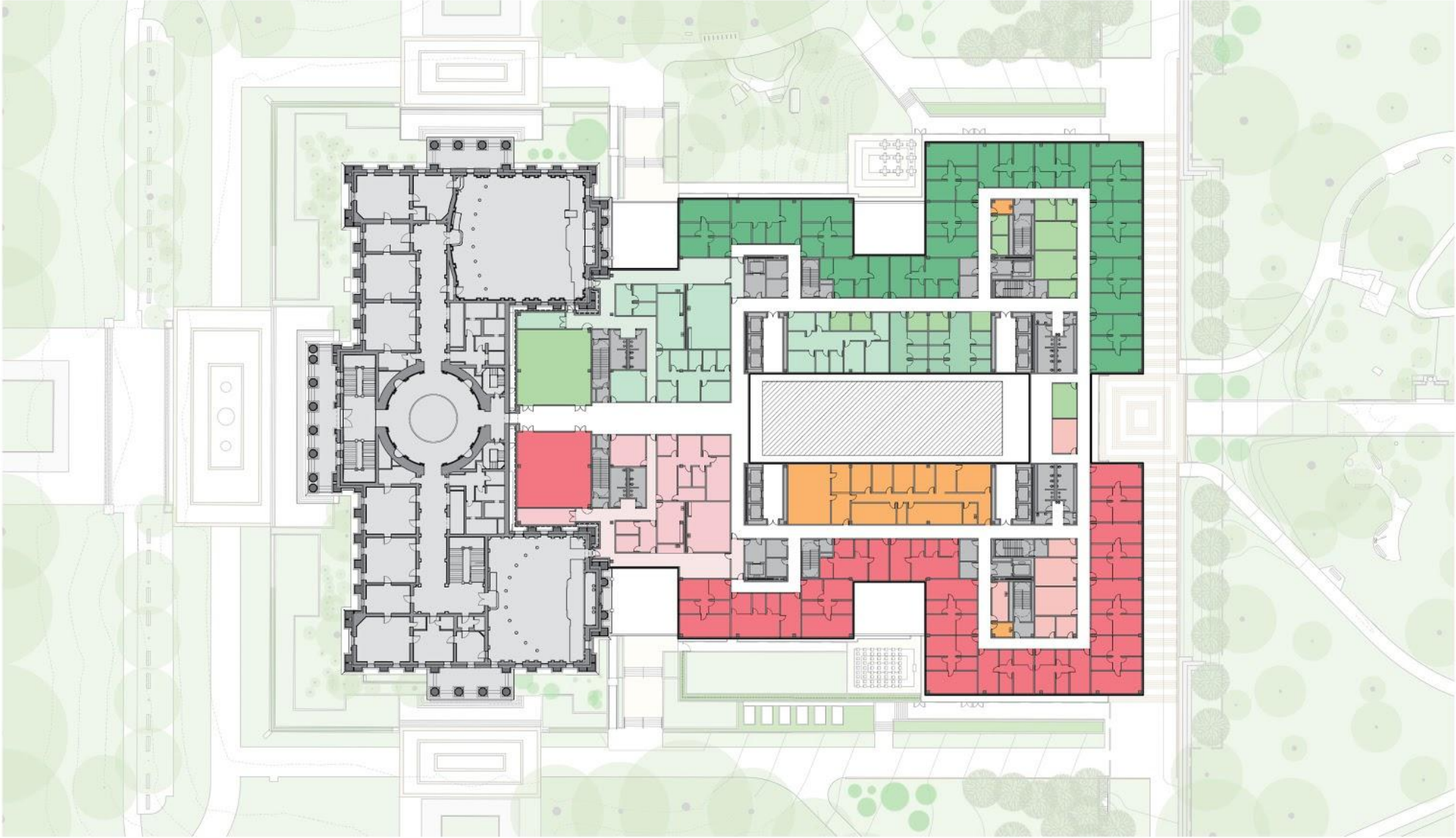


- ASSEMBLY
- SENATE
- EXECUTIVE
- JOINT SUPPORT

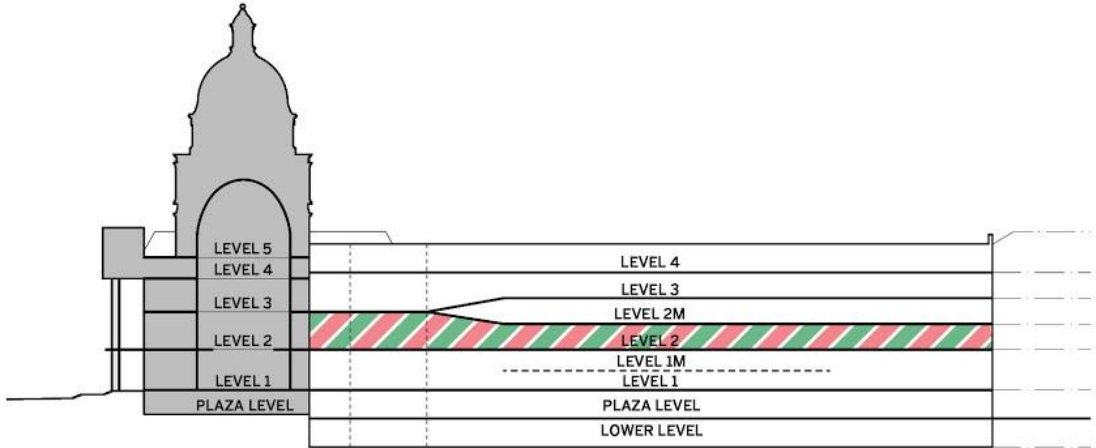




PLANS & STACKING DIAGRAMS  
 LEVEL 2 - LEGISLATIVE

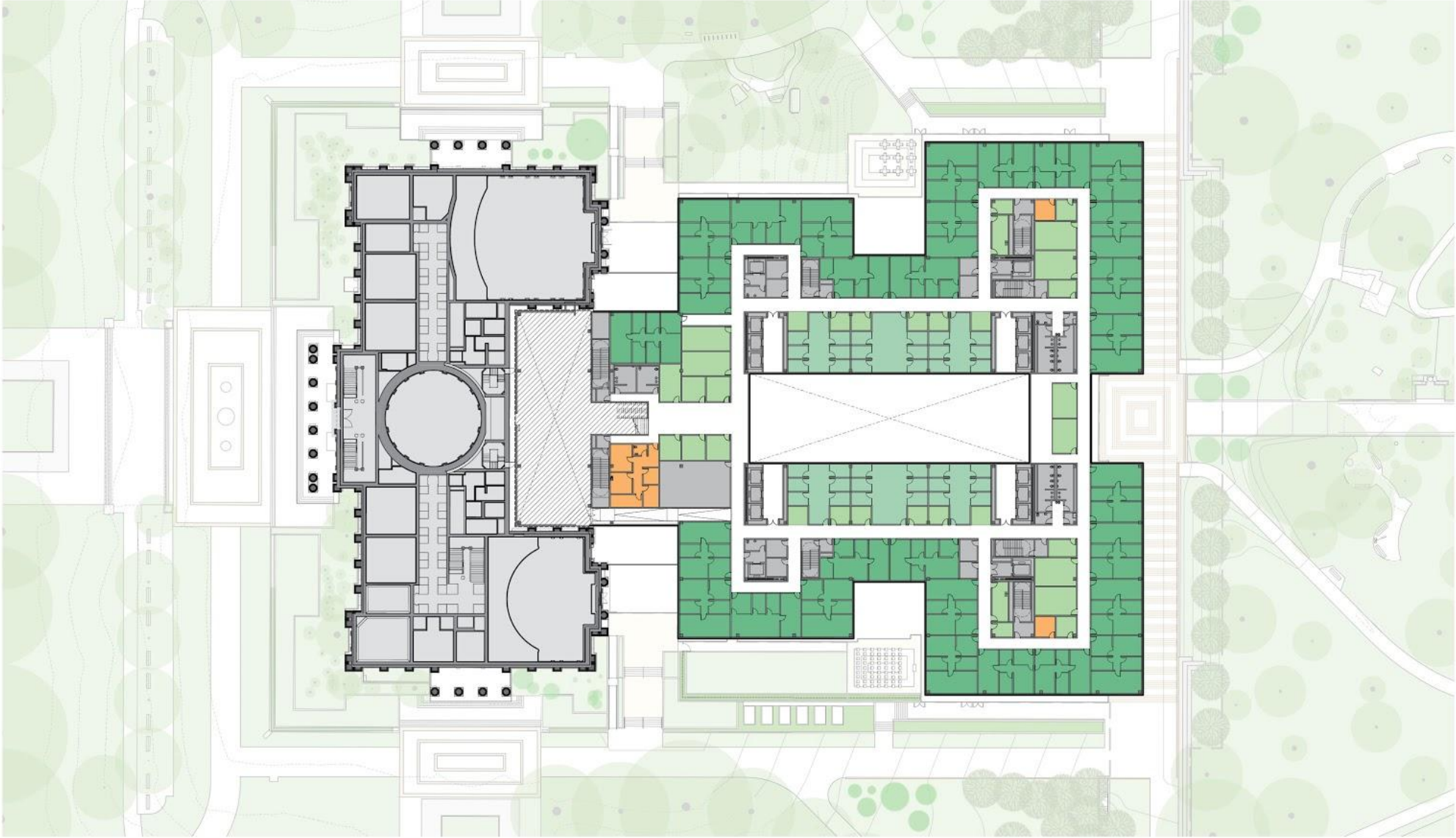


- ASSEMBLY
- SENATE
- EXECUTIVE
- JOINT SUPPORT

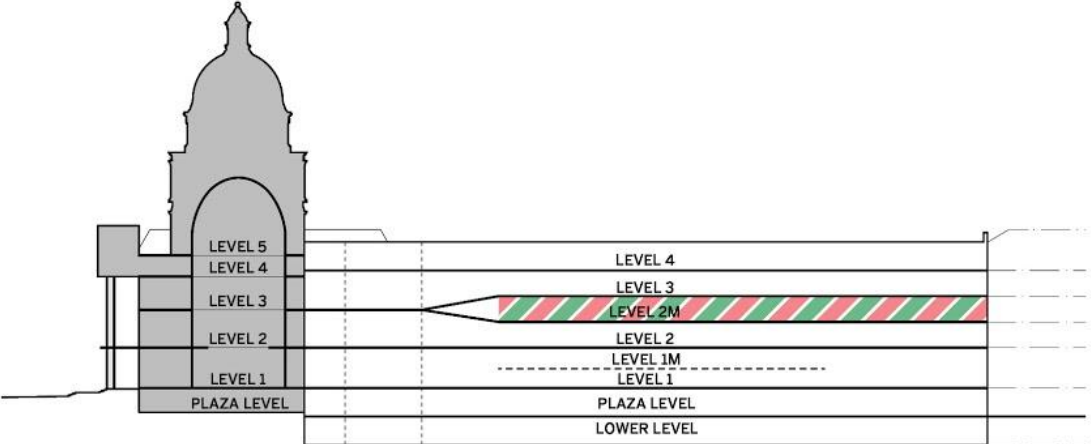




PLANS & STACKING DIAGRAMS  
 LEVEL 2M - LEGISLATIVE

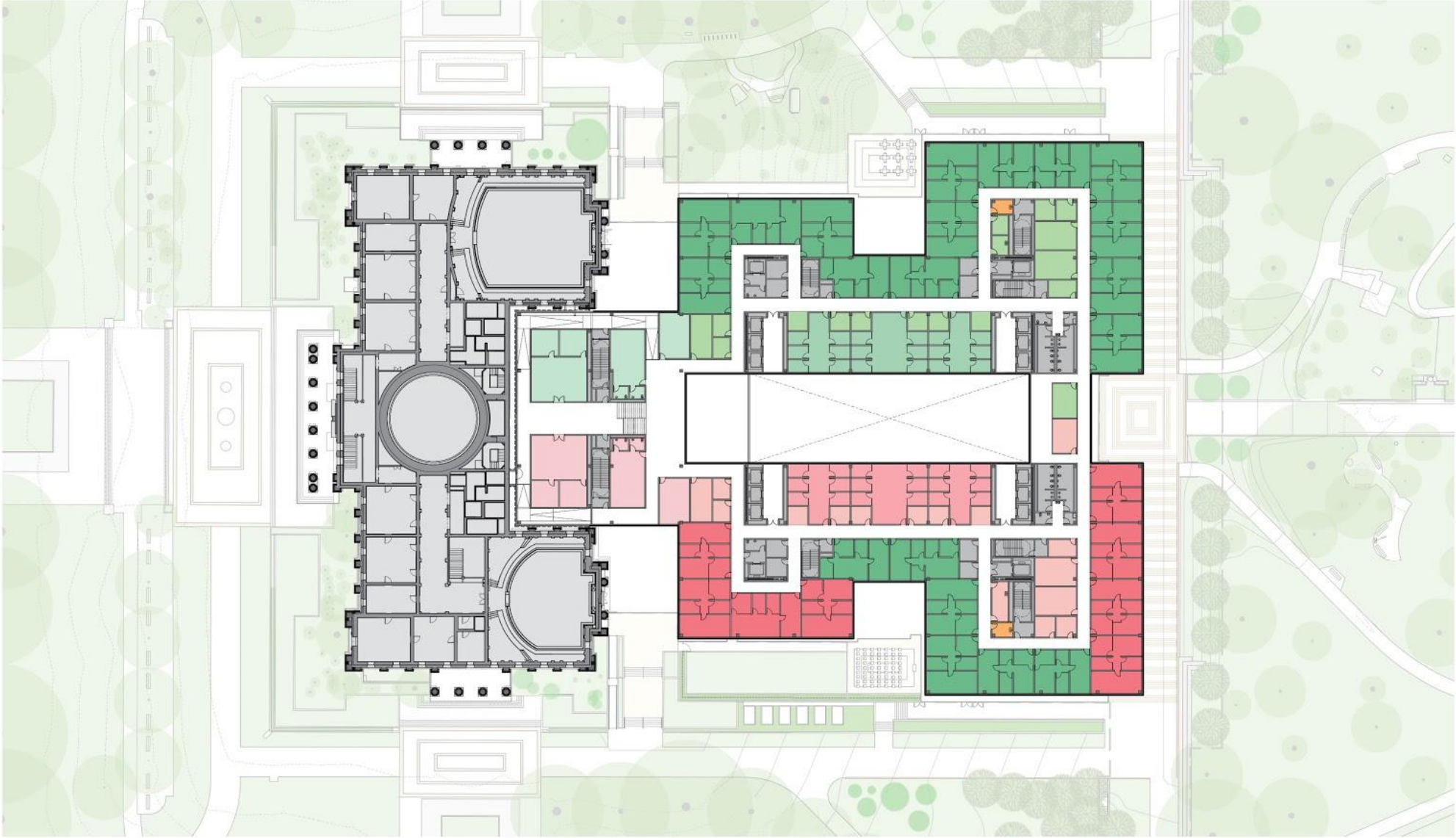


- ASSEMBLY
- SENATE
- EXECUTIVE
- JOINT SUPPORT

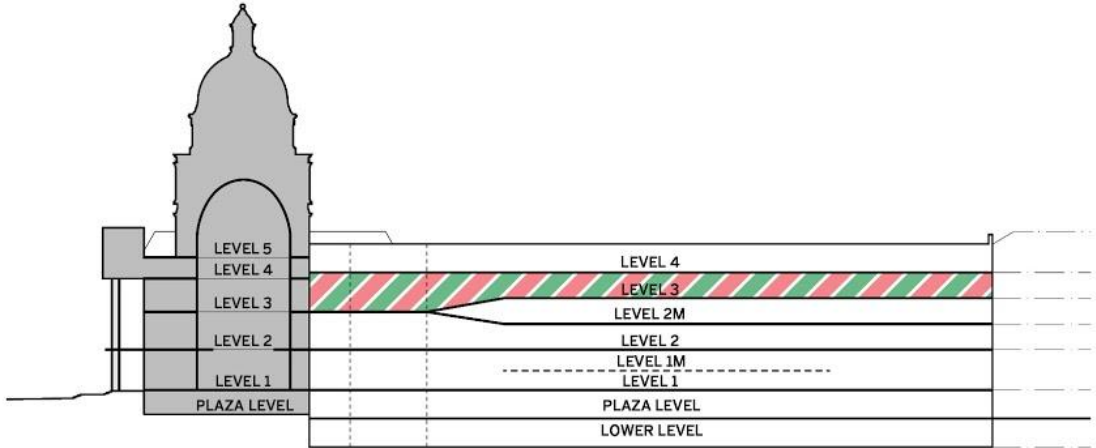




PLANS & STACKING DIAGRAMS  
**LEVEL 3 - LEGISLATIVE**

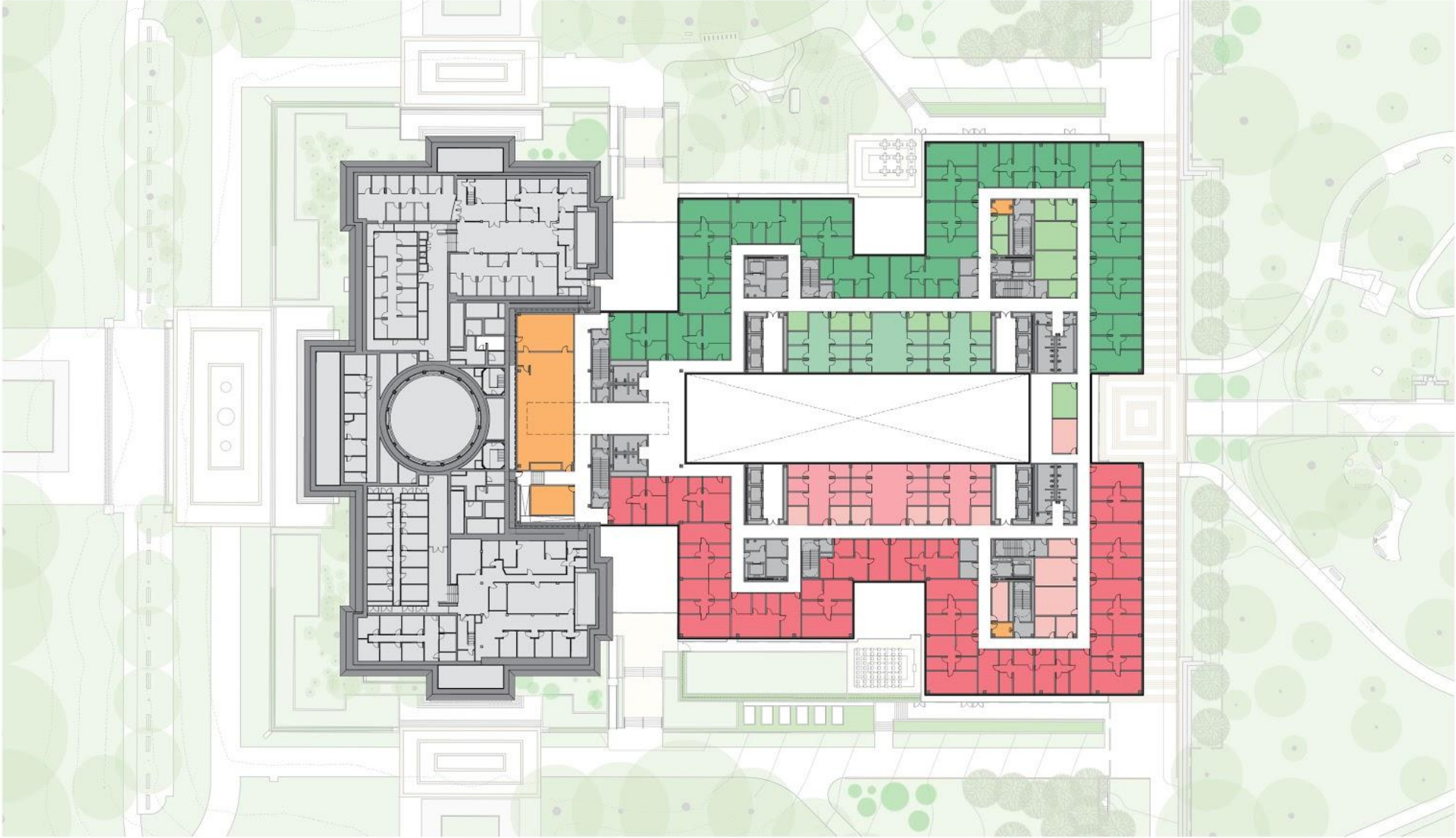


- ASSEMBLY
- SENATE
- EXECUTIVE
- JOINT SUPPORT

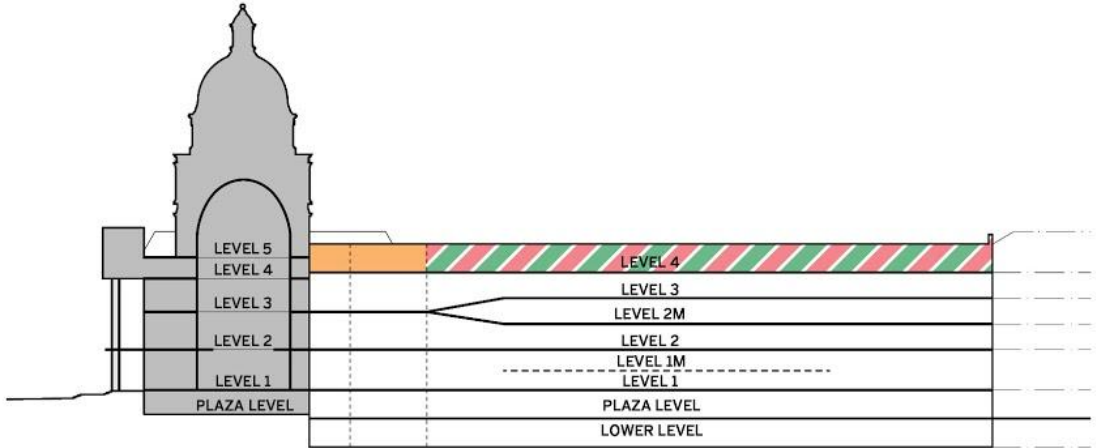




PLANS & STACKING DIAGRAMS  
 LEVEL 4 - LEGISLATIVE & CAFE



- ASSEMBLY
- SENATE
- EXECUTIVE
- JOINT SUPPORT





# PLANS & STACKING DIAGRAMS

## PLAZA LEVEL - HEARING ROOMS

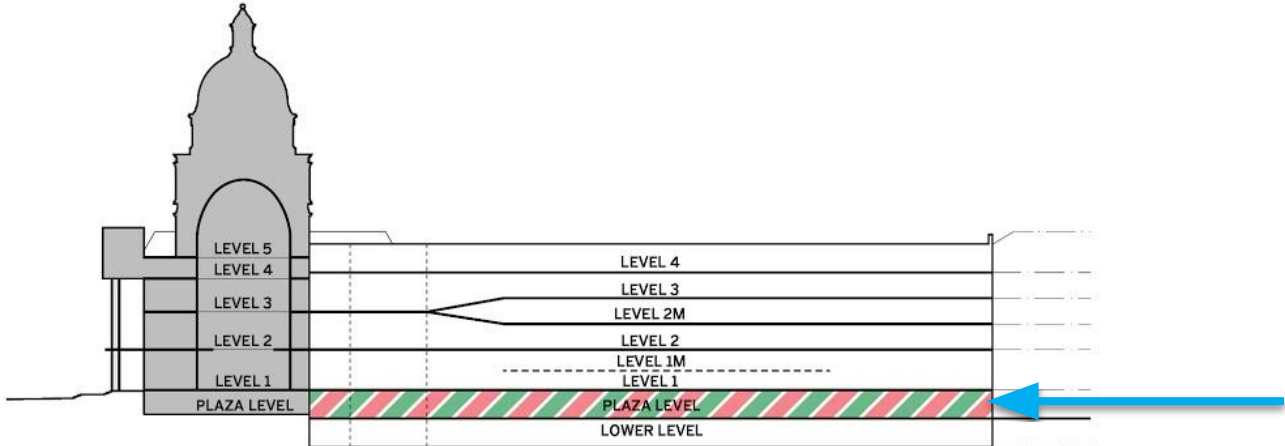
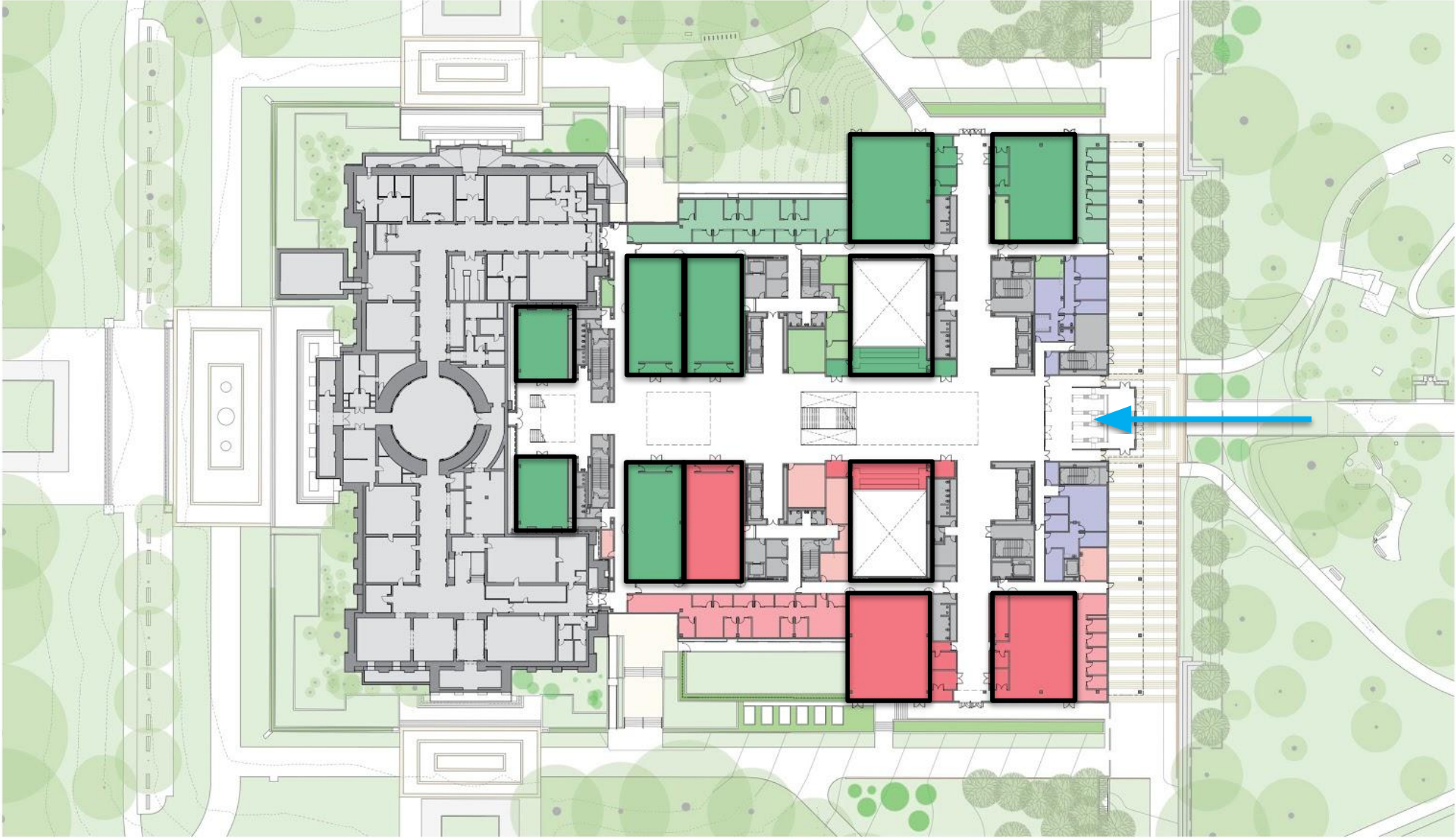
### ASSEMBLY

- 1 LG
- 2 MD
- 5 S
- 2 XS

### SENATE

- 1 LG
- 2 MD
- 2 S
- 0 XS

- ASSEMBLY
- SENATE
- EXECUTIVE
- JOINT SUPPORT



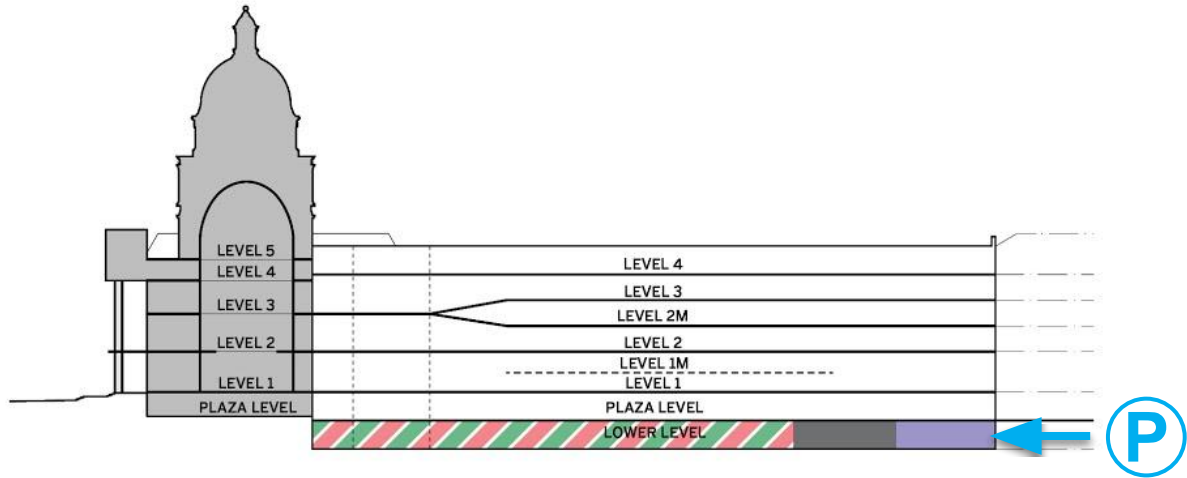


PLANS & STACKING DIAGRAMS

LOWER LEVEL - HEARING ROOMS, FACILITIES & PARKING



- ASSEMBLY
- SENATE
- EXECUTIVE
- JOINT SUPPORT





# NEW CAPITOL ANNEX CONCEPTS

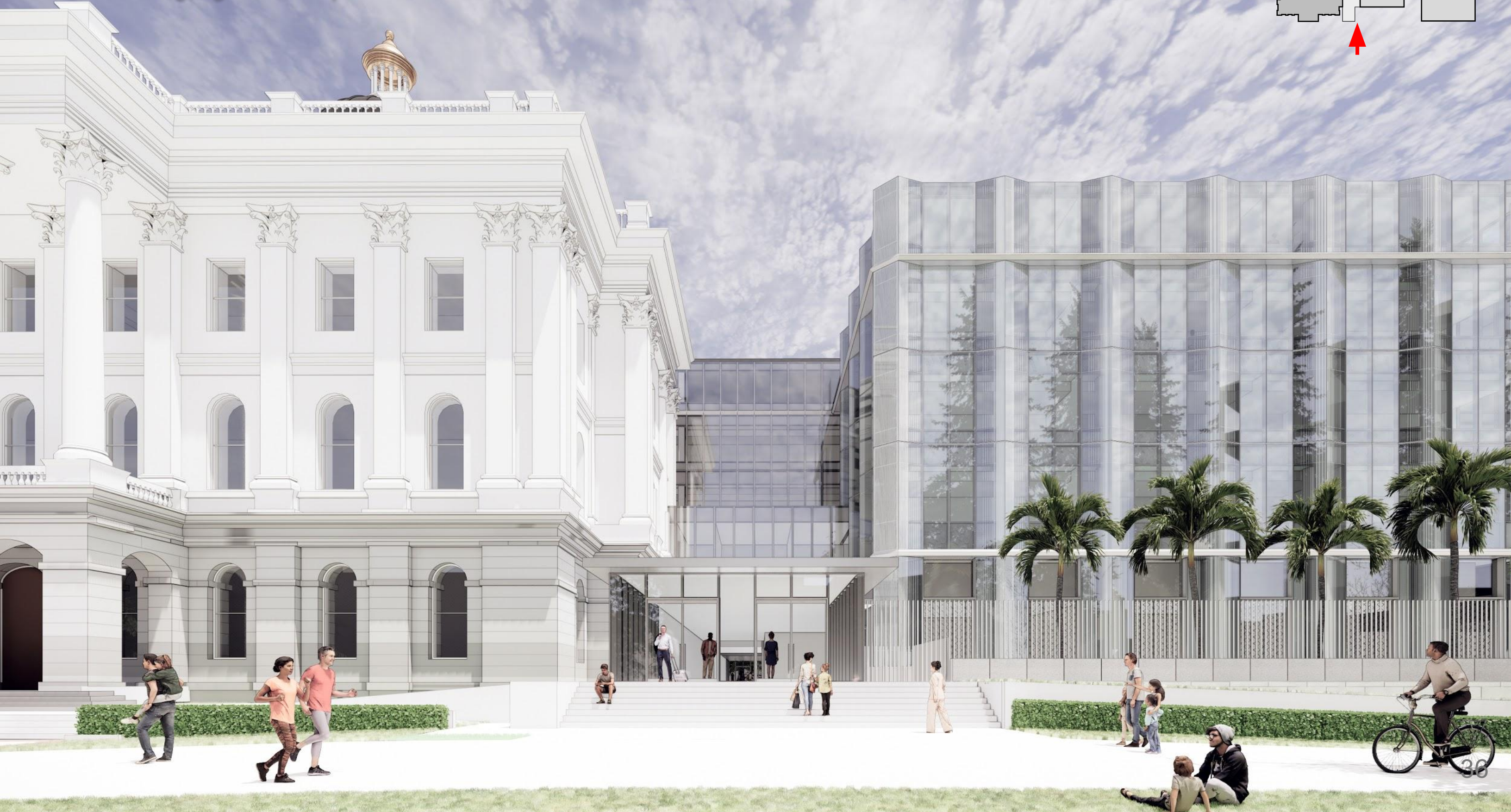
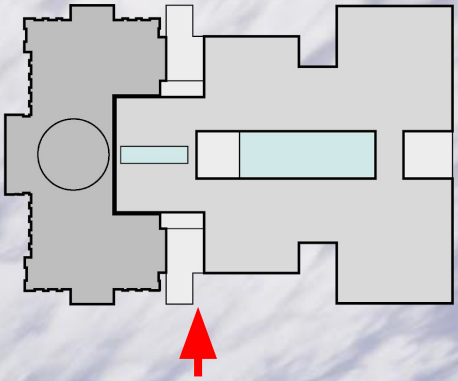
## MASSING & FACADE DESIGN

*“California’s new Capitol Annex should... welcome all Californians, engage all Californians, safeguard the future of all Californians, & demonstrate healthful, accessible & sustainable designs...”*



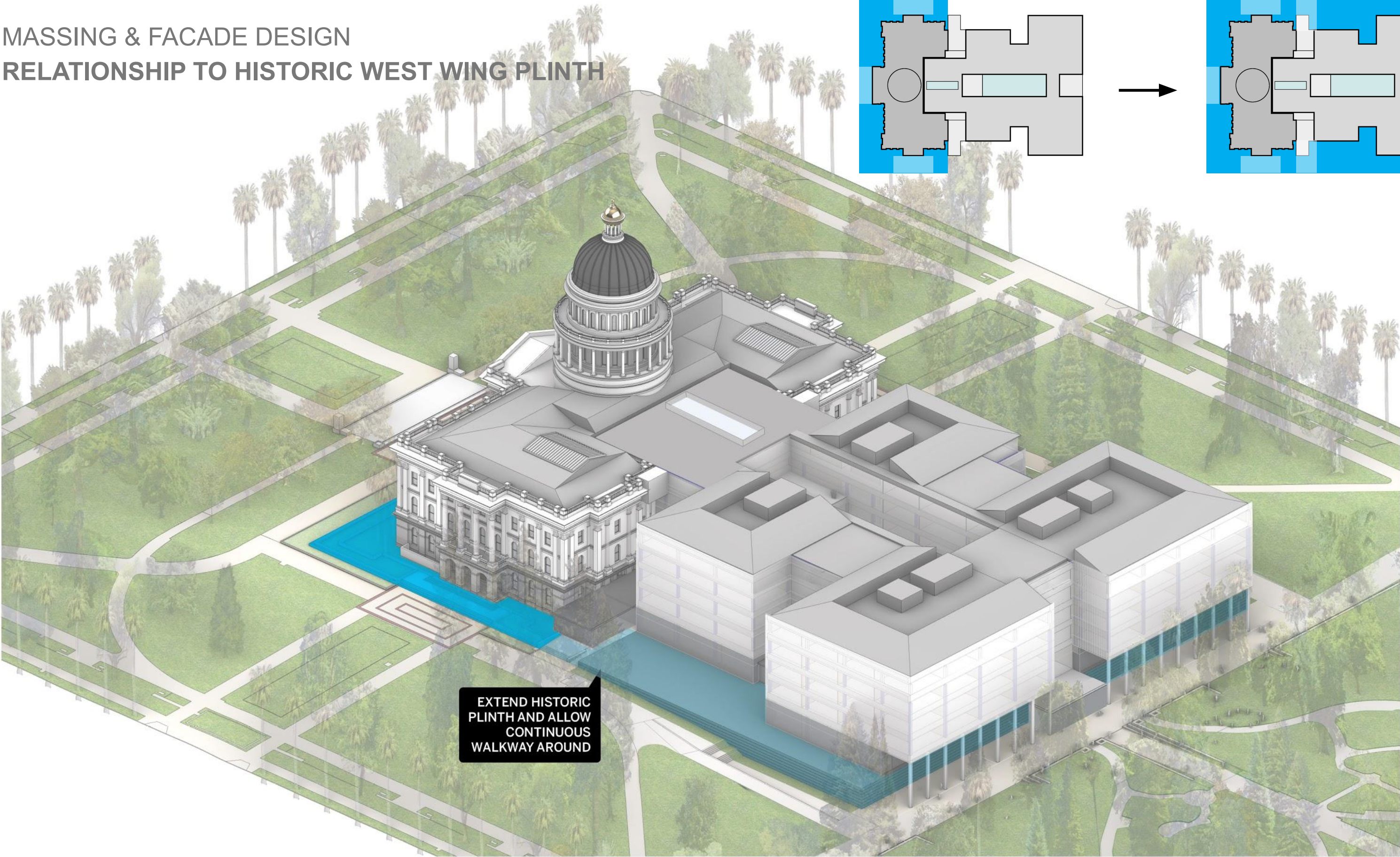
MASSING & FACADE DESIGN  
RELATIONSHIP TO HISTORIC WEST WING

*Welcoming, light & transparent*



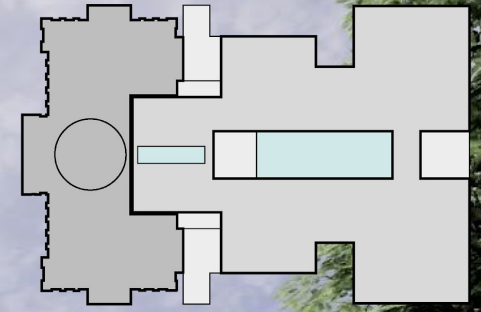


MASSING & FACADE DESIGN  
RELATIONSHIP TO HISTORIC WEST WING PLINTH





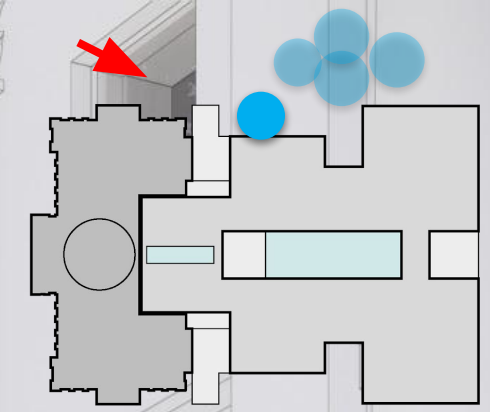
MASSING & FACADE DESIGN  
RELATIONSHIP TO PARK & TREES





MASSING & FACADE DESIGN  
RELATIONSHIP TO PARK & TREES

*The design protects the Moon Tree and Sisters of Mercy  
grove on the north side of the new Annex*





MASSING & FACADE DESIGN  
"FIRST AMONG EQUALS"





**THANK YOU**

